

3–20 Ton Internal Combustion Sideloader Forklift



3–20t

内燃侧面式叉车

**INTERNAL COMBUSTION
SIDE LOADER FORKLIFT**

Product Overview

3–20 ton internal combustion side loader forklifts are industrial vehicles specially designed for side loading of long-shaped cargo such as timber, steel pipes and section steel. They perform excellently in narrow-aisle working spaces and deliver unique functions unavailable for conventional counterbalance forklifts. Widely adopted for loading, stacking and transporting long materials in ports, warehouses, railway stations, oilfields, machinery manufacturing, construction, metallurgy and non-ferrous metal industries.

Integrating advanced domestic and international technologies, this product balances practicality and innovation, serving as an ideal solution for industrial logistics and warehousing.

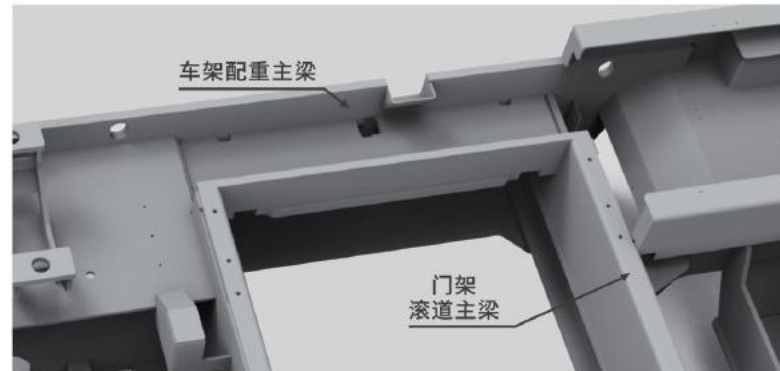
Core Advantages

- Suitable for transporting long-form goods
- Perfect for narrow and compact working aisles
- Flexible steering system
- Low working platform height
- Wide platform design

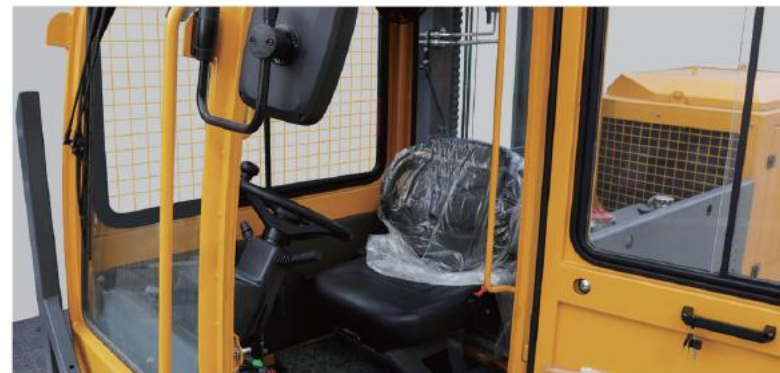
Contour Parameters / Product Parameters

Product Characteristics

1. A gearbox (angle box) transmits power between the transmission and drive axle, delivering higher transmission efficiency, smoother operation and superior reliability compared with traditional wheel box structures.
2. The frame adopts an integral welded frame structure, offering high tensile and torsional resistance. The main beam of the mast roller track is thickened and reinforced for outstanding durability.



3. Multiple service hatches on the engine compartment for easy inspection & maintenance of engine, transmission, hydraulic and electrical components
4. Ergonomically designed operator cab with wide vision and comfortable driving experience



5. Standard duplex mast (2-stage basic mast)

Standard Factory Configuration

- Hydraulic power steering
- Left rearview mirror
- Cable-type hand brake
- Adjustable steering wheel assembly
- Pneumatic tires
- 4-spool multi-way control valve
- Multi-functional instrument panel
- Hydraulic oil level gauge
- Headlights, warning lights, front turn signals, windshield wiper
- Standard operator cab with safety belt seat
- Standard load forks, standard load backrest
- Rear combination lights, boarding handrail

- Load holding safety valve, electric horn, cooling fan
- USB charging port

Optional Extra Configurations

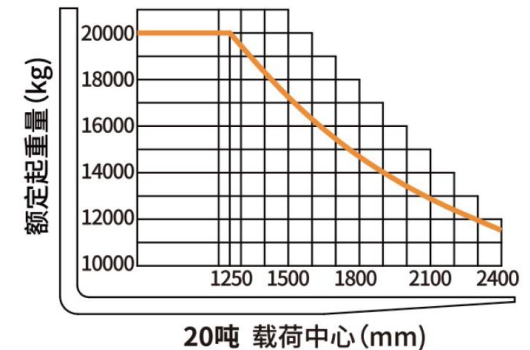
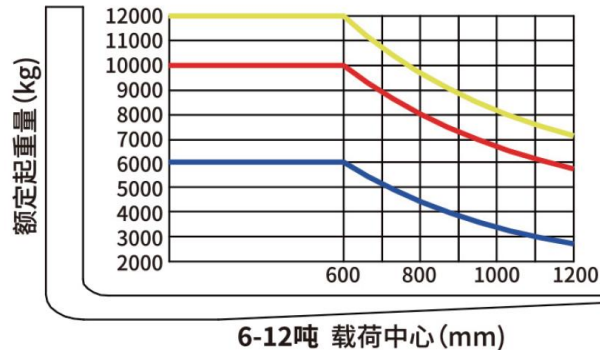
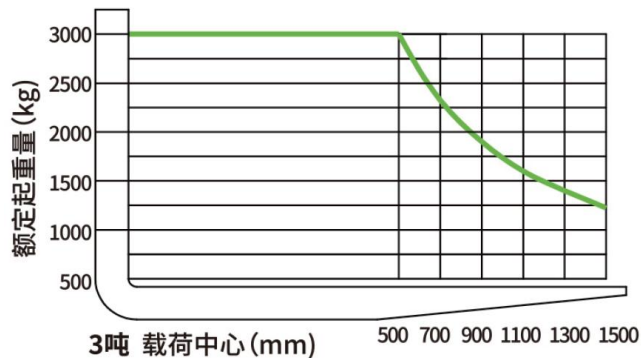
- Solid tires, rear dual tires
- Windshield wiper with water spray
- Fire extinguisher
- Right rearview mirror
- Custom body color as requested by client
- 5-spool multi-way control valve
- Warm air heater
- Onboard monitoring camera
- OPS operator presence sensing system
- Heating & cooling air conditioner

Mast Performance Parameter Table (2-Stage Duplex Mast)

Mast Model	Max Lift Height (mm)	Rated Load Capacity (kg) @ Load Center 600-1250mm					Collapsed Height (mm)					Full Lift Height (mm)				
门架类型	起升高度 (mm)	负载能力(载荷中心距mm)kg					不起升高度(mm)					最大起升高度(mm)				
		500	600	600	600	1250	FDS30	FDS60	FDS100	FDS120	FDS200	FDS30	FDS60	FDS100	FDS120	FDS200
M300	3000	3000	6000	10000	12000	/	2125	2750	2995	3185	/	3920	4245	4490	4680	/
M350	3500	/	/	/	/	20000	/	/	/	/	3690	/	/	/	/	5600
M360	3600	3000	6000	10000	12000	/	2425	3055	3295	3485	/	4520	4850	5090	5280	/
M400	4000	3000	6000	10000	11000	/	2675	3305	3545	3735	/	4920	5300	5540	5730	/
M450	4500	2700	5500	9000	10500	/	2925	3555	3795	3985	/	5420	5800	6040	6230	/
M480	4800	2600	/	/	/	/	3075	/	/	/	/	5720	/	/	/	/
M500	5000	2500	5000	8000	10000	/	3175	3805	4045	4235	/	5920	6300	6540	6730	/
M550	5500	2000	4300	7500	9000	/	3475	4105	4345	4535	/	6420	6850	7090	7280	/
M600	6000	1700	3600	6500	8500	/	3725	4355	4595	4785	/	6920	7350	7590	7780	/
门架倾角(前/后)		4°/6°	5°/8°	5°/8°	5°/8°	5°/8°										

Mast Tilt Angle (Forward / Backward)

Note: Capacities shown are computed with upright in vertical position. Based on a 1200 mm cube load configuration with the center of gravity at the true center of the cube and standard forks. Truck capacities with upright in forward tilt position will be less. Long forks and unusually wide or loads may also reduce capacity.



3 Ton Load Capacity Curve

Load Capacity Curve Diagram: Vertical axis = Rated Load (kg); Horizontal axis = Load Center Distance (mm)

Company Information

Changzhou alco international co.,ltd.



外形参数 CONTOUR PARAMETER

